

RATES INFORMATION

Location of Rating Unit 135 Laingholm Drive Laingholm Auckland 0604

For period 1 July 2018 to 30 June 2019

Assessment Number 1234170168

Valuation Number 33800-00000039700

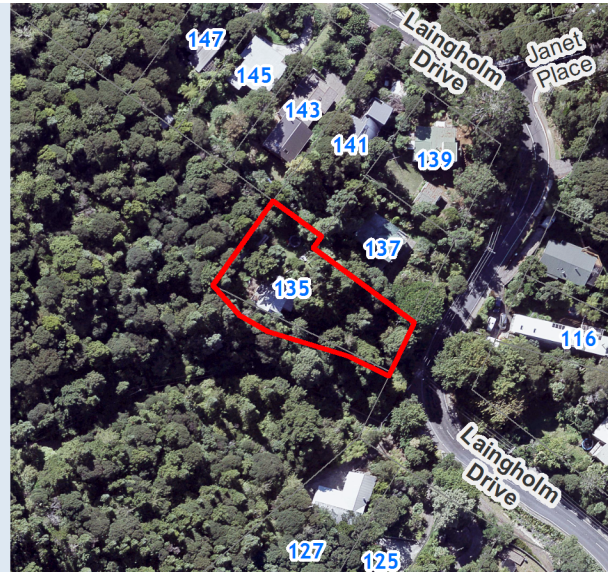
Valuation as at date 1 July 2017

Capital Value \$800,000

Land Value \$320,000

CT Number NA137B/408

Description of Rating Unit LOT 1 DP 209878



Description of Rates	Factor/Unit	Factor Value	Rate/Charge	Total (GST incl.)
Uniform Annual General Charges				
Uniform Annual General Charge	Number of separate parts	1	\$414.00	\$414.00
General Rates				
General Rate - Urban Residential	Capital Value	\$800,000	0.00183316	\$1,466.53
Waste Management				
Waste Management - Base Service	Number of separate parts	1	\$100.39	\$100.39
Natural Environment				
Natural Environment Targeted Rate - Non Business	Capital Value	\$800,000	0.00004326	\$34.61
Water Quality				
Water Quality Targeted Rate - Non Business	Capital Value	\$800,000	0.00006076	\$48.61
Other Targeted Rates				
Total Rates for 2018/2019 (GST inclusive)				\$2,064.14