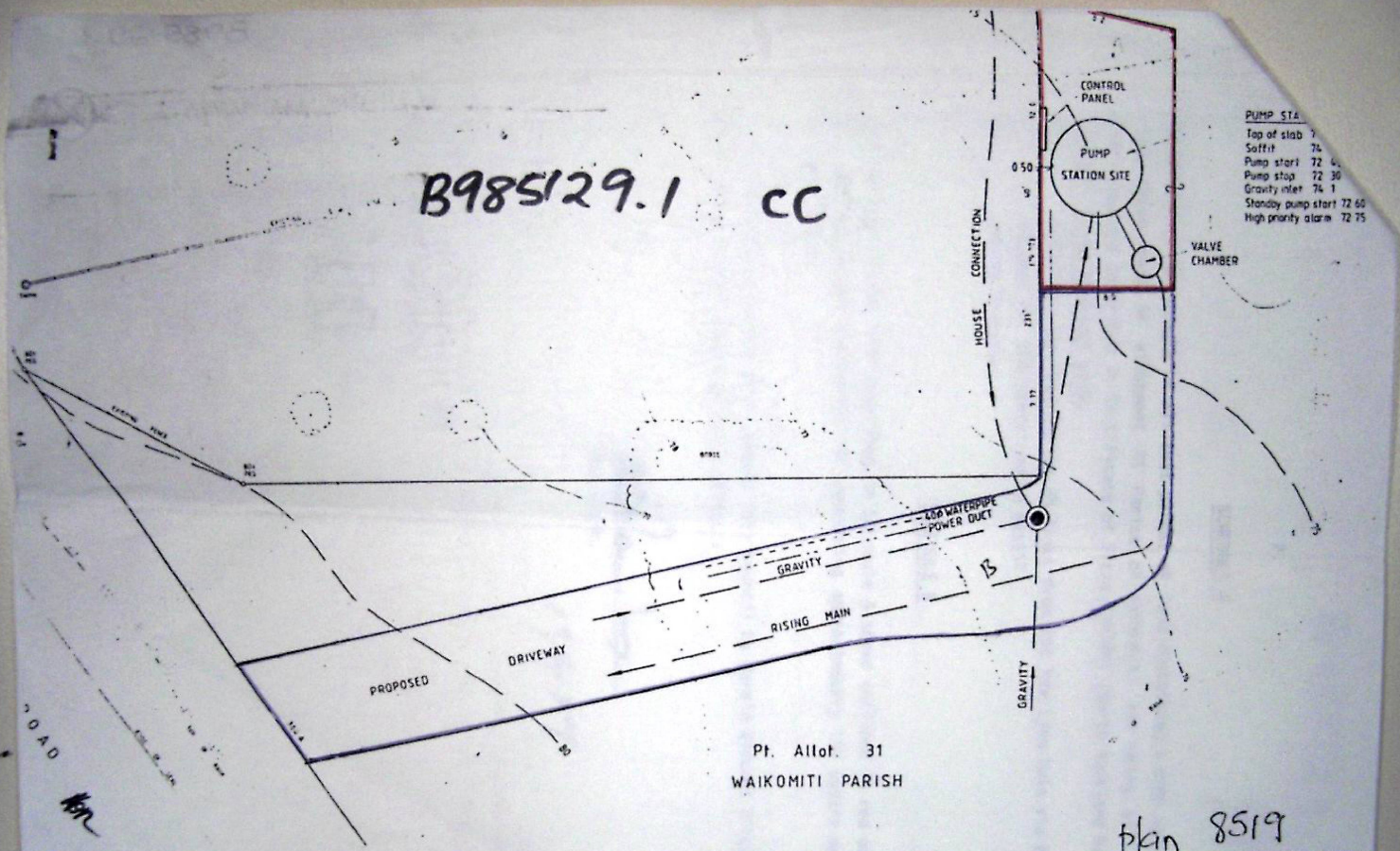


B985129.1 CC



PUMP STA

Top of slab	71
Soffit	74
Pump start	72.4
Pump stop	72.30
Gravity inlet	74.1
Standby pump start	72.60
High priority alarm	72.75

Pt. Allot. 31
WAIKOMITI PARISH

plan 8519

DATE	BY	WAITEMATA CITY COUNCIL	SC/
		366A HUIA ROAD PUMP STATION	10
		LAINGHOIM SEWERAGE SCHEME	22